

Clarity CSW Data Handling Software

Clarity-CSW provides highly configurable 32-bit data handling capability and flexibility previously only available in significantly higher priced systems.

Feedback from users in over thirty countries has made this package stable, user oriented and easy to learn.

The user interface is remarkably intuitive allowing an easy transition and rapid familiarisation for new users in education, research or industry. The short learning curve makes it ideal for college and student use. The power features such as data export, advanced reporting and System Suitability calculations make it suitable for even the most demanding application.

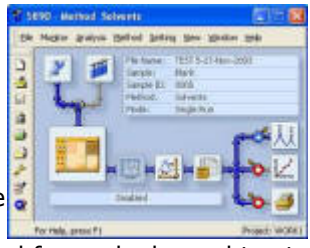


Clarity-CSW also offers an array of instrument control modules, any of which can be fully integrated in the software package at low cost.

Clarity-CSW is designed to be user installed. The package contains everything you need, plug and play PCI data acquisition interface, software on CD, manuals, pre-wired signal cables, trigger cables with push button switches and even a mouse mat.

Single Injection

Starting a run with Clarity-CSW is simple and intuitive. Click on an instrument to open it, if the security options are enabled you may also need to enter your user name and password.



With the instrument 'open', click on the single injection button (the one marked with a single vial and syringe). This opens the parameter page shown below where you enter the run parameters. Finally click the 'Run' button or press the pre-wired trigger button that is supplied for each channel to start acquisition.

Of course Clarity-CSW will interface with autosamplers and instruments for remote start operation



Notice in the example screen shot, how the file name and chromatogram ID can use any of a wide variety of auto incrementing variables such as time, date or run number, this makes routine work really easy and is typical of the thought that has gone into Clarity-CSW throughout.

Once acquisition has started you can get to the Monitor screen to see the run in 'real time'.

And of course, while Clarity-CSW is acquiring data you can be reprocessing or viewing any data from previous runs or use the PC for other tasks.

Sequence Runs

Clarity-CSW incorporates a fully featured sequence editor that can be used to control batch acquisition or data reprocessing operations.



Colour coding indicates progress as the sequence runs through.

Each sample in a sequence can use a different method and report.

Instrument Control

Clarity-CSW supports a number of different instrument and autosampler control options, with more on the way.

Shown here is the HPLC gradient control module which can be used with any analogue or frequency driven pump system.



HP5890 GC Control



CTC Autosampler Control



LC Pump Control



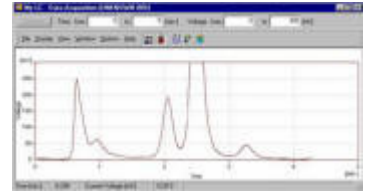
LC Autosampler Control

Signal Monitoring

While Clarity-CSW is acquiring data, each channel has its own display window. You can see a 'live' time and data display and change any scale or simply zoom in using the mouse.

Select between fixed or automatic scaling of the Y axis to keep the data on-screen.

A similar 'live data' display is available even when Clarity-CSW is not acquiring a run, this useful feature can be used to monitor baselines and column conditions prior to starting a run.



Integration

Setting up a data handling method is remarkably easy. In most instances no user intervention will be required and default values can be used.

In the event that changes have to be made in order to handle 'difficult' chromatograms, these are carried out graphically.

Simply select a tool, such as Baseline tail tangent and click twice to bracket the chromatographic region to be modified.

New integration results using that event are displayed instantly and the new event is entered into the event table without user intervention.

Peaks can be annotated and free text labelling of chromatograms is allowed.



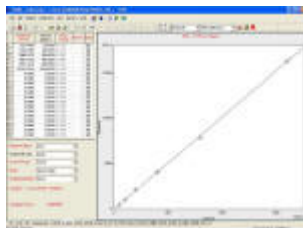
Calibration

Calibration within Clarity-CSW is particularly powerful. Up to 20 standard levels are supported and a wide choice of curve fit routines are available to ensure the highest quality results.

Each standard is treated individually and immediate display of the calibration curve for that component is possible.

Peaks can be added to the calibration graphically by the click of a mouse reducing the possibility of errors.

Peak grouping is supported and is also handled in a similar graphical way.



System Suitability

The System Suitability Test (SST) system is an integrated module intended for validation of a system based on evaluation of chromatograms acquired from the Clarity station.

The SST module is represented in the Clarity station as SST Result tab in the bottom part of the Chromatogram window.

Clarity enables individual or batch validation, either of individual chromatograms or mean values of a group of chromatograms. The user can easily change the number of validated components, sets of validation parameters, values of validation limits and the type of method.



Validation can be run during measurements, or additionally using batch processing. Validation data can be saved automatically in a database file intended for further processing.

In connection with a sequence you can even use the SST module to pause a sequence when a specified value is exceeded, or to perform predefined functions.

Reporting results

Report Templates are used to define what the printed output will look like.

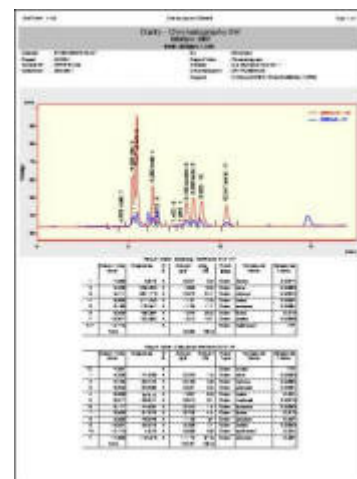
These are easily created and with the preview (see right) display, output will be just as you need.

Report templates can easily be switched and when using a sequence for reprocessing or acquisition different runs such as unknowns, blanks, or calibration standards can each use different report templates.

And in keeping with Clarity CSW's easy to use graphical interface the system will only print if the 'toggle lever' is set to the print position.

Any windows printer is supported and colour output is available.

Results and chromatograms can be exported for use in other Windows applications such as word processors, spreadsheets and databases.



Specifications

Package

- Software on CD, hardware A/D converter (internal PCI or external USB), hardware key, cables and manual

System Configuration

- Any 32-bit Windows system (98, Me, NT, 2000, XP)
- Recommended configuration for Win 2000/ XP: PC Pentium/900 MHz, 256 MB RAM, monitor 1024x768, 64K colours (16 bit High Colour), CD ROM, free PCI slot/USB connector for A/D converter
- Minimal configuration for Win 98: PC Pentium/200 MHz, 32 MB RAM, monitor 800x600, 256 colours, CD ROM, free PCI slot/USB connector for A/D converter



Number of Instruments/Channels

- Up to 4 chromatographs (instruments) at a time, each up to 4 detectors (channels). 1 chromatograph (instrument) 1 time base
- **Supported Chromatographs**
- Any detector with voltage output, up to 30m distance

Measuring Ranges

- Bipolar: 156, 1 250, 10 000 mV, integration frequency up to 100 Hz, 24-bit resolution



GLP

- Password protection
- Password expiration
- Electronic signature
- Audit trails
- User account with access rights

Co-operation with autosamplers

- The station cooperates with all autosamplers (as a passive measuring system or as an active measuring system), direct control available (refer to the list of controlled instruments)

Integration

- Separate integration table for every detector, 27 integration parameters (peak width, threshold, tangent slope ratio etc.), integration parameters programmable in time, automated reintegration

Calculation types

- Both without and with calibration (internal and external standard method), parameters of individual peaks for assessing efficiency of the column and the chromatographic system as a whole, SST Module for establishing deviations and reproducibility of some selected parameters

Calibrations

- 6 types of calibration curves, up to 20 levels, reference peaks, groups, unlimited number of standards (peaks)

Chromatogram Manipulation

- Overlay, mathematical operations with chromatograms, custom labels and settings for chromatograms

Automation

- Sequences, automatic launch of selected commands or applications immediately following chromatogram acquisition – Post Run, Batch

Presentation of results

- Integrated customizable table of results, columns with user-defined calculation, summary table, and export in text or database format

Custom Calculations

- 12 predefined mathematical operators, 15 basic and 4 summary functions

Protocol

- Custom protocols, print preview option

Data Export

- ASCII, AIA, dBase

Data Import

- CSW17, CSW32, ASCII, AIA

Multi-user environment

- Selectable system of user accounts with independently customizable behaviour and appearance for individual users.

Network environment

- Easy off-line (at the file level) data sharing among all stations in a local network

Add ons

- Control Modules
- GPC
- Test IQ
- Validation Kit
- SST Module
- Clarity Eval (off-line version)
- LIMS Interface

Support/Warranty

- Free software updates
- Free access to knowledge database
- 3 years hardware warranty

How to Order:

The package contains everything you need, plug and play PCI data acquisition interface, software on CD, manuals, pre-wired signal cables, trigger cables with push button switches and even a mouse mat! Whilst the system is designed to be simple for users to install we are more than happy to carry out installation and training.

Clarity-CSW is available in the configurations shown below, varying only in the number of acquisition channels. Each acquisition channel is totally independent of the others, but may be linked. For instance a 4-channel system may be used with four chromatographs with one detector each, or with two chromatographs each with two detectors.

An educational discount of 10% is offered to degree awarding institutions.

We usually have Clarity in stock for immediate delivery.

All of our systems can be installed on a PC running Windows XP. The PCI versions require one spare PCI expansion slot and the USB version. We can supply the PC or install it on your existing system.

Order Code	Description	Price
Commercial System and Prices		
PCBAICW1S	Clarity Chromatography Software for Windows Data Handling System. Comprises software, PCI interface and cables. Single channel version.	£2,580.00
PCBAICW2S	Clarity Chromatography Software for Windows Data Handling System. Comprises software, PCI interface and cables. Two channel version.	£3,180.00
PCBAICW3S	Clarity Chromatography Software for Windows Data Handling System. Comprises software, PCI interface and cables. Three channel version.	£3,910.00
PCBAICW4S	Clarity Chromatography Software for Windows Data Handling System. Comprises software, PCI interface and cables. Four channel version.	£4,395.00
USBABCW1S	Clarity Chromatography Software for Windows Data Handling System. Comprises software, USB interface and cables. Single channel version.	£2,840.00
USBABCW2S	Clarity Chromatography Software for Windows Data Handling System. Comprises software, USB interface and cables. Two channel version.	£3,340.00
System with Educational Discount		
PCBAIECW1S	Clarity Chromatography Software for Windows Data Handling System. Comprises software, PCI interface and cables. Single channel version. With educational discount.	£2,322.00
PCBAIECW2S	Clarity Chromatography Software for Windows Data Handling System. Comprises software, PCI interface and cables. Two channel version. With educational discount.	£2,862.00
PCBAIECW3S	Clarity Chromatography Software for Windows Data Handling System. Comprises software, PCI interface and cables. Three channel version. With educational discount.	£3,519.00
PCBAIECW4S	Clarity Chromatography Software for Windows Data Handling System. Comprises software, PCI interface and cables. Four channel version. With educational discount.	£3,955.50
USBABECW1S	Clarity Chromatography Software for Windows Data Handling System. Comprises software, USB interface and cables. Single channel version. With educational discount.	£2,556.00
USBABECW2S	Clarity Chromatography Software for Windows Data Handling System. Comprises software, USB interface and cables. Two channel version. With educational discount.	£2,970.00
Clarity CSW Optional Modules		
BASTS	System suitability software	£585.00
BAGCC	GC Control module software	£838.50
BALCC	LC Control module software	£774.00
PCBAIFEQR	Interface module for use with LC control software. 4x Volts out & 4x frequency out PCI	£448.50
BAACS	Autosampler control software	£585.00
Clarity-CSW PC Data Station		
BACSD	PC Data Station with Windows and Printer	£700.00
Installation and Training		
LABOUR7	Installation carried out at your site	£650.00
SA45-Install-2	Installation on your PC at our premises. (Shipping extra)	£150.00
LABOUR10	One day training course covering theoretical and practical aspects of data-handling. Includes development and calibration of your method.	£750.00
*All prices in sterling and exclude VAT & carriage		

Free Updates

Updates to the Clarity software are available from time to time. If you have the Clarity software package and would like to be kept informed as and when update become available please let us know