



# HT300A

*THE LIQUID  
AUTOSAMPLER THAT  
WORKS WITH YOUR  
CURRENT GC*



The HT300A is a GC autosampler made to meet the Liquid injection needs of your analysis. A simple, elegant, reliable and inexpensive way to give productivity a significant boost and extend the life of your existing GC!

## Autosampler Operation

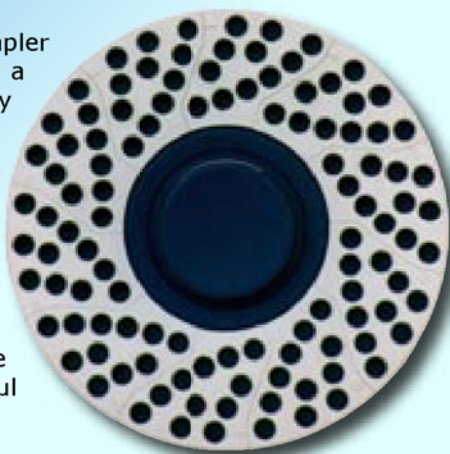


The HT300A can be controlled by the user-friendly integrated keypad, or by a PC using the HT-COMSoft Software.

The automatic injection sequence may have up to 15 steps that can be programmed to include:

- First sample of group
- Last sample of group
- Analytical method
- Number of injections for each sample
- Pre and Post-washing solvent position
- Internal Standard position (if used)

The HT300A autosampler is available with a 10 position fixed tray or with a 110 position rotating tray for 2ml or 2.5ml vials. Syringes of 1µl to 100µl may be used and with the option of a special large volume injection version, this can be increased to 1000µl per sample.



### Internal Standard

Internal standards are used to ensure your analyses are accurate and to make allowances for any variations in the GC performance. The internal standard should have a predictable retention time (that is completely resolved from the rest of the sample) and should make up a known amount of the total sample injected.

Using internal standards on the HT300A is simple and does not require any samples to be measured or weighed. The volumes of the internal standard and the sample are entered into the method. The sampler first pulls up the internal standard, then inserts an air gap to prevent mixing, followed by the main sample. In this way it is easy to ensure that a defined proportion of the injected sample is made up using the internal standard.



### Key Features

- Syringe may be washed with solvent or sample
- Injections may be made on two columns (high throughput and confirmation mode)
- Rotating head design leaves injection port free for manual injection
- Internal standard sampling
- Memory stores 10 different methods
- Variable fill speed allows for wide range of sample viscosities
- Sampling system eliminates air bubbles
- Programmable sampling and injection speed



## HP5890 Autosampler Replacement



HTA have developed a software interface that allows the HT300A to be controlled via the popular Agilent Chemstation®.

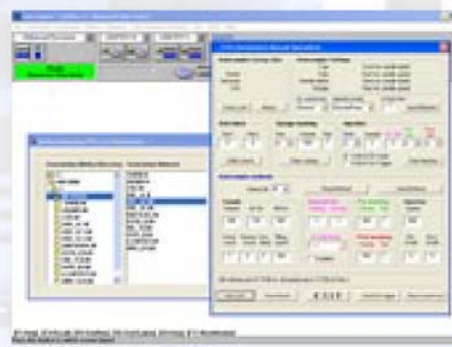
Using the interface is easy. A pop-up window allows the autosampler to be programmed using the required injection method whilst the GC method is programmed in the normal way.

The interface allows the full injection parameters of the HT300A to be used, such as internal standards, even though these options may not have been available with some of the Agilent auto-injectors.

The HT300A is not only compatible with the HP5890 and HP6890 GCs, but with all other major models of GC in use today. If you upgrade an old autosampler to the HT300A and the GC is changed later on, the sampler has the ability to migrate to any new GC type and is therefore a very cost-effective option.

### Benefits include:

- No requirement to replace a functional GC
- Direct replacement gives identical results using the same methods
- No re-training required – minimum expense and downtime
- Full compatibility for easy GC migration at a later date



**Running only a small number of samples?...**

## The 10 Sample HT310A

**provides an economical solution**

The HT310A Autosampler is an economical solution if you need the high levels of reproducibility that an autosampler gives, but do not run large sample batches.

The HT310A has a fixed "Pocket" that holds up to 10 sample vials and gives the sampler a very small footprint. It uses a similar interface to the HT300A and can be interfaced with most Gas Chromatographs. The functionality and ease of use remains the same as the 110 position HT300A and software control is available if required. Up to 10 sample methods can be stored and the autosampler includes control over all injection parameters.





## HT-COMSoft

COMSoft is Microsoft Windows™ based software dedicated for communications with each type of HTA autosampler. The software may be run stand-alone or alongside other Windows software such as GC control or data systems.

Through COMSoft it is possible to:

- Program the method files
- Program the sequence files
- Compile the sample list
- Print the contents of all files
- Command a single injection
- Control the set up
- Graphically display an automatic run



## HT300A Specifications

**Syringe Sizes:** 1, 10, 25, 50, 100 & 1000µl (1000µl with large volume version only)

### Tray Capacity

**Sampling:** 110 Vials, 2 or 2.5ml  
**Sample Volume:** Steps of 0.1µl  
**Air Volume:** Steps of 0.1µl  
**Aspirating Speed:** 1 - 100µl/sec  
**Needle Washing:** Up to 15 Strokes  
**Washing Mode:** Every Injection, Sample or Step  
**Air Bubble Removal:** Up to 15 Strokes  
**Viscosity Time:** 0 - 15 secs

### Injection

**Injection Speed:** 0.1 - 100µl/sec  
**Waiting Time (before and after injection):** 0 - 99 secs  
**Injection Depth:** Variable

### Internal Standard Technique

**IS Volume:** Steps of 0.1µl  
**Air Gap Volume:** Steps of 0.1µl  
**Mode:** 1 or 2 air gaps

### Control

**Electrical Control:** RS232 and TTL

### Physical Characteristics

**Dimensions (W x H x D):** 420 x 520 x 400mm  
 270 x 520 x 400mm (HT310A)  
**Weight:** 9.0kg  
 8.0kg (HT310A)

### Your Local Dealer:

### About HTA

HTA is a major European autosampler and robotics manufacturer, based in Brescia, Italy. HTA design and manufacture scientific instruments and laboratory automation.

HTA GC and Headspace autosamplers are sold by GC companies around the world.

[www.speckanalytical.co.uk](http://www.speckanalytical.co.uk)



**HTA Distributor: Speck & Burke Analytical, Alva Industrial Estate, Alva, FK12 5DQ, United Kingdom**

**Tel:** +44 (0)1259 222600 **Fax:** +44 (0)1259 222618 **Email:** [support@speckanalytical.co.uk](mailto:support@speckanalytical.co.uk) **Web:** [www.speckanalytical.co.uk](http://www.speckanalytical.co.uk)